

Winona Lake Preservation Association



2013: HOT HOT HOT

Greetings! Well, it's been another 'extreme weather' summer. After a couple months without rain, we returned to a normal lake level. The weeds have been unusually mild this year, except in the northern shore. We sprayed later than we ever have. Perhaps this demonstrates what the nutrients flowing from our three inlets during normal rains do to encourage weed growth in our lake.

We are working on many exciting things to improve and preserve our Lake. First, a 'thank you' to those who attended the Annual WLPA meeting held in April. Turnout was the best in several years! Thanks also to those who have supported the WLPA and sent in dues and donations. If you wish to send in your dues, a form is enclosed.

Winona Lake Water Study

Second, we have decided to support a full year study of our three inlet streams. Grace College's Dr. Nate Bosch, Director of Kosciusko Lakes & Streams (KLAS), has requested that we fund the September 15 - through May 15 testing of our inlet streams for \$6,000. Stream sampling will include monitoring and testing water flow, pH, dissolved oxygen, temperature, conductivity, suspended sediments, and several chemicals. Our three inflowing and one outflowing streams will be monitored biweekly over the course of this study. This sampling will allow estimates of the total amounts of these materials coming from each of the streams around Winona Lake over an entire annual cycle. The phosphorus data will be able to be translated into estimates of the extent of weeds and algae caused by incoming phosphorus

at specific points. The information gathered in this study will allow WLPA and KLAS to set future direction on how to protect and improve our lake. We are proud to support this first of its kind in-depth analysis of Winona Lake. We will no longer have to speculate about what is flowing into the lake and at what entry points. We'll have real data.

WLPA Finally Receives Special Project Funding

Third, I'm thrilled to announce that we have received an 80% funding grant from the State LARE (Lake And River Enhancement) program, in the amount of \$48,000. The request was submitted, for a third consecutive year, in January and (continued on page 2)

Spring Newsletter

2013

UPDATE: WINONA LAKE INFLOW and OUTFLOW WATER QUALITY STUDY

Grace College studies the four streams of Winona Lake

The inflowing and outflowing streams of a lake transport materials that will determine how a lake will function.

We cannot protect and improve the quality of Winona Lake if we do not understand the four streams around the lake. Our Kosciusko Lakes and Streams center at Grace College has been studying the three inflowing streams and one outflowing stream around Winona Lake since May 2012. This research is partially funded by the Winona Lake Preservation Association and includes Peterson Ditch, Keefer-Evans Ditch, Cherry Creek flowing in from the southeastern end of the lake, and Eagle Creek flowing out of the lake from the western shore.

Unlike most of the streams around the lakes of Kosciusko County, these four streams continued to flow during the drought we experienced this past year. The continued inflowing water allowed Winona Lake to be less impacted compared to some other lakes we saw around the county which experienced water levels that dropped between 18 inches and four feet. Eagle Creek, which is the outflowing stream from Winona Lake, consistently had more water flowing through it compared to the three inflowing streams combined. This indicates an important groundwater contribution to Winona Lake through springs even during the drought.

In addition to the water in these four streams, we have also been keeping track of what the water is washing into Winona Lake as well as what the water might be flushing out. We are particularly watching nutrients in the streams and lake since nutrients cause excess rooted aquatic plants (i.e. weeds) and phytoplankton (i.e. algae) to grow out of control.

Nutrient concentrations are higher in



PRESERVE | PROTECT | CONSERVE

inflowing streams compared to the outflowing Eagle Creek indicating that Winona Lake is retaining these nutrients. Reducing the nutrients entering the lake through these three inflowing streams will reduce the amount of weeds and algae that can live in the lake.

We will continue to study Winona Lake and its streams this summer and will summarize and interpret our research findings to help us better manage the lake in the future. We will be able to make recommendations to the Winona Lake Preservation Association and lake residents as a result of these research efforts.

—Nathan S. Bosch, PhD

Assistant Professor, Environmental Science, Grace College,

www.grace.edu/environment

Director, Kosciusko Lakes and Streams, www.water.grace.edu

(574)372-5100 ext 6447, boschns@grace.edu

Treasurer's Report

If you haven't paid your 2013 dues, a form is included in this newsletter. For a copy of the Treasurer's Report, please contact trustmesmith@yahoo.com or call 574-253-1280

Purple Martin House Project: A Note from Our Island Members

Purple Martins fly thousands of miles from South America to return to the same nesting sites year after year. Winona Lake is on the flight path and nesting route! East of the Rocky Mountains, Purple Martins are completely dependent on humans to supply their nestboxes (birdhouses) in order to breed. The Purple Martins need you in order to perpetuate their numbers in the future. Boat docks and lake front properties make ideal locations for mounting Martin Houses. For additional information about the Purple Martin contact Jim and Lisa Lemasters at 574-527-4668 or 574-265-1343 or Janet Ludwig at 321-279-8794.

<http://purplemartin.org> and <http://www.purplemartins.com>

**WINONA LAKE
PRESERVATION ASSOCIATION
2013 MEMBERSHIP FORM**



January 1, 2013 - December 31, 2013
PO Box 13 Warsaw, IN 46581-0013

Name: _____ Spouse: _____

Lake address: _____ Zip: _____ Phone: _____

Mailing Address (if different from above): _____

City/State: _____ Phone: _____

City/State: _____

E-Mail Address: _____

WE REQUEST THIS ADDRESS AS WE ARE SWITCHING TO A PAPERLESS NEWSLETTER IN JANUARY, 2014 UNLESS YOU DO NOT HAVE E-MAIL. LET US KNOW.

CONTRIBUTION LEVELS

MEMBER: \$50.00 BRONZE MEMBER: \$100.00 +

SILVER MEMBER: \$200.00 + GOLD MEMBER: \$300.00 + PLATINUM MEMBER \$500.00 +

Enclosed is a check in the amount of \$50.00 for my 2013 membership, plus a contribution of \$ _____ to be used to continue the efforts of the WLPA.

Please return to Winona Lake Preservation Association
P.O. Box 13, Warsaw, IN 46581-0013.

The association is a 501(C) (3) organization under the Internal Revenue Code. Donors may deduct bequests, contributions, and gifts if they meet the applicable provisions of sections 2055, 2106, and 2522 of the code.

For office use only:

Membership Paid _____ Contribution _____ Total Amount Paid _____

Date Received _____ Check Number: _____ To Treasurer _____

Your WLPA Board of Directors for 2013

**Chris Cummins, President
Joy Lohse
Dr. David Dick**

**Chris Rankin
Tony Elliott**

**Dodge Elkins
Pat Miller**

**Peggy Lieftring
Charlie Smith
Bill McCarrick**

2013 WLPA MEMBERSHIP

Eugenia Fulkerson & Mary Geyer
Dave & Amy Higgins
Jeff & Anita Linck

Bronze Members

Mary C. Eherenman
Ginger & Damien Carboneau
Dr. David & Lynette Dick
Tim & Lori Early
Dodge & Kim Elkins
Jake & Susan Handel
Joy Lohse
Chris & Julie Rankin

Silver Members

Dr. Joe & Jill Thallemer

Gold Members

Charlie & Ann Smith
Stephen & Katherine Adair

Platinum Members

Pete and Peggy Liefkring

A final list of all 2013 members will be listed in the Fall 2013 Edition of the WLPA newsletter.

Smart Medication Disposal

A drive-up Drop-Box is available in Kosciusko County to safely discard expired medication. The monitored box is located at the entrance to the Kosciusko County Sheriff's Department parking lot on West Main Street, Warsaw.

The adverse effects of flooding sanitary systems, lakes, rivers and other waterways with prescription medications has gained national media attention due to the potential damage to our eco system, habitat, and water quality.

Providing a medication collection box eliminates the potential for illegal or misuse of medication and allows citizens to have their medications destroyed properly by incineration rather than disposing in landfills or a more dangerous method: a waste water system through flushing outdated drugs down a toilet. The Kosciusko Coalition on Drug Education (K-CODE) purchased the Prescription Drop-Box. K-CODE asks citizens to dispose of expired prescriptions in the collection box in their original containers if possible.

WE'RE GOING PAPERLESS in JANUARY 2014!

Please sign up for the newsletter by providing us with your e-mail address.

You can send your e-mail address in when filling out the enclosed membership form for 2013. OR, you can e-mail your address to Dodge Elkins who is overseeing the newsletter at:

DElk@magtrol.com

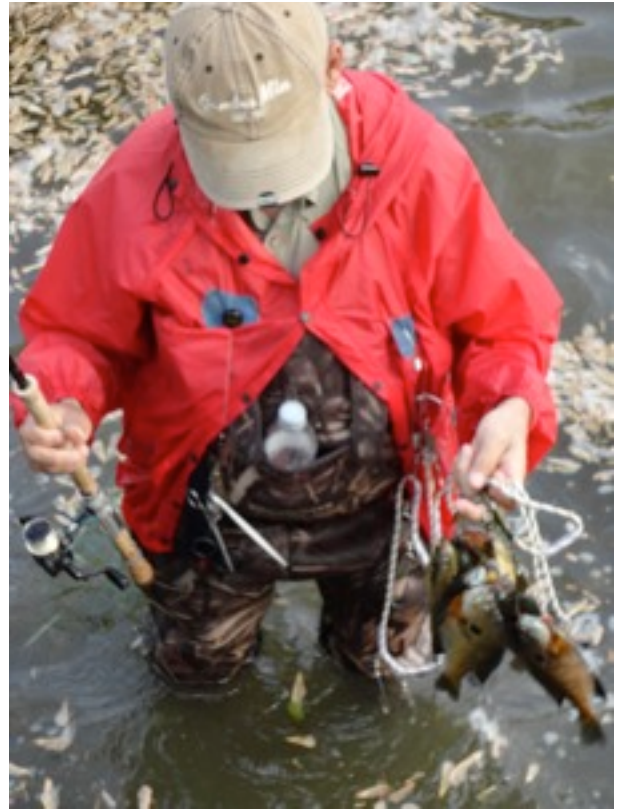
If you do not have e-mail, please inform us and we will continue sending you a hard copy.

We would like to send you the WLPA newsletter via E-Mail and also send you updates about the current studies being done on Winona Lake on a quarterly basis.



Cherry Creek Study To Reduce Sediment & Nutrients Reaching Winona Lake

Davey Resource Group is conducting an Engineering Feasibility Study in the Wyland Ditch (Cherry Creek) watershed. The study is funded by a grant from the Indiana Department of Natural Resources Lake and River Enhancement Program along with a match from Winona Lake Preservation Association. The purpose of the study is to identify up to five potential projects within the watershed that will reduce the amount of sediment and nutrients reaching Winona Lake from Wyland Ditch. Feasibility of implementing each project will be assessed by examining functional benefit of the projects, landowner willingness, permit requirements, cost-to-benefits, and other site specific conditions. Questions regarding the study can be directed to Alicia Douglass of Davey Resource Group at 260-969-5990, ext. 7202.



Alicia Douglass
Biologist/Project Manager
Davey Resource Group
Natural Resources Consulting
Email: alicia.douglass@davey.com
www.davey.com

Winona Lake Preservation
Association

PO BOX 13
WARSAW, IN 46581
574.267.7500

ADDRESS SERVICE REQUESTED

